

Facia plate installation kit for:

HYUNDAI

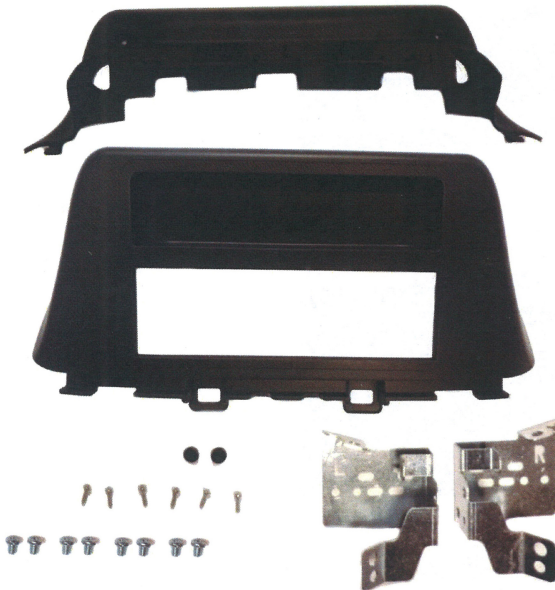
Model: Kona

Year: 2017>

Kit content: single DIN facia plate kit
mounting brackets + screws

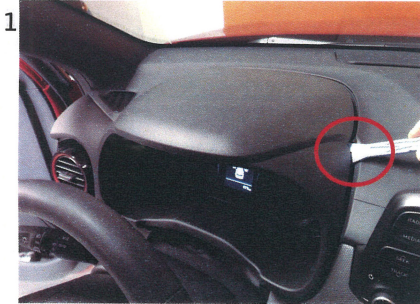
Compatibility: Compatible with single DIN facia device

Customer code:

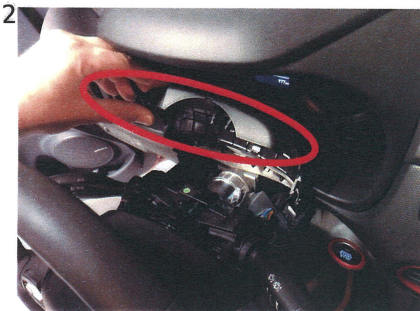


INSTALLATION MANUAL

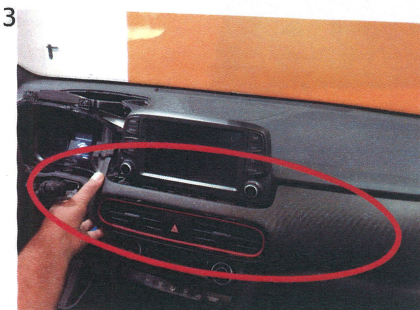
All installation work must be performed by a qualified professional installer only.
The manufacturer / dealer is not liable for any kind of incidental or indirect damages.



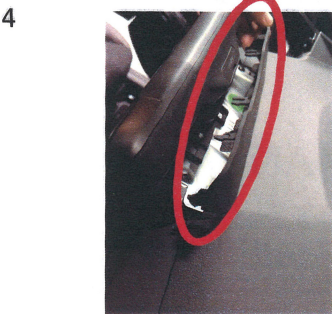
1 Remove and save the plastic part as shown in the picture.



2 Remove and save the plastic part as shown in the picture.

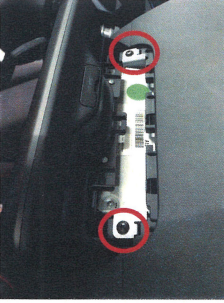


3 Remove and save the plastic part as shown in the picture.



4 Remove and save the plastic part as shown in the picture.

5



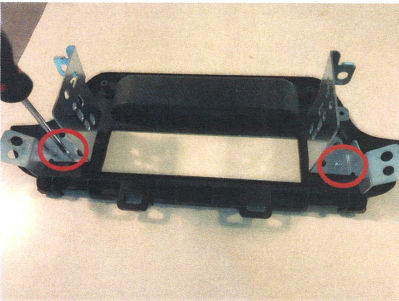
5 Remove and save the two screws as shown in the picture.

6



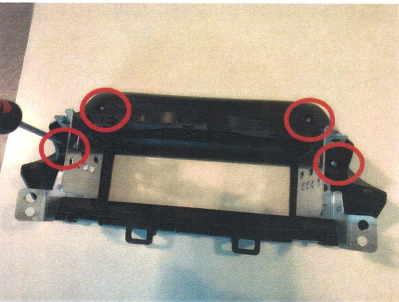
6 Remove and save the two screws as shown in the pictures.

7



7 Fix the supplied brackets with 2 2.9x13 supplied screws per side as shown in the picture.

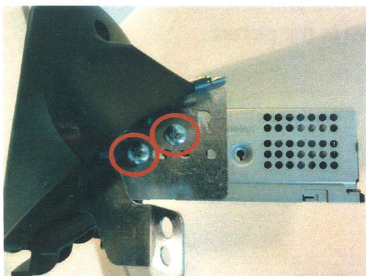
8



8 Fix the rear plastic shell shown in the picture to the front fascia plate with 4 2.9x13 supplied screws as shown in the picture.

Please remember to use the two supplied rubber caps to cover the two screws on top of the fascia plate.

9



9 Insert the new radio unit as shown in the picture and fix it with 2 M5x8 supplied screws per side.

10



10 Connect all the cables, check the correct operation and put back in place all parts in their position. In the picture it is shown the final result.